

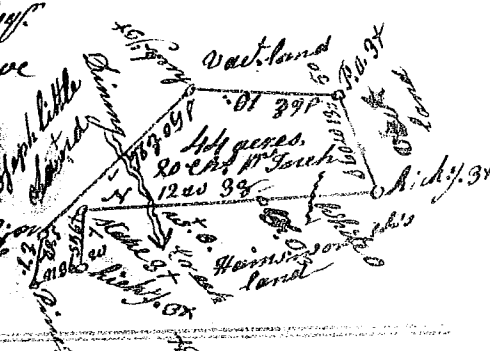
State of S. Carolina Pursuant to a warrant from John Thomas Esq. Comr. of locations Dated 14<sup>th</sup> June 1786, I have admeasured and laid out unto John Little a tract of Two hundred & Twenty three acres of land, in 96<sup>th</sup> District on the branches of Sugar Creek in Union County, and hath such shape and Marks as the above Plat Represents, Survey. 15<sup>th</sup> June 1786,  
 13 Jofse Connell D<sup>y</sup>  
 Recorded 17<sup>th</sup> Jan<sup>y</sup>. 1787, Det. self



State of S. Carolina Pursuant to a warrant from John Thomas Esq. Comr. of locations Dated 14<sup>th</sup> June 1786, I have admeasured and laid out unto John Little a tract of 70 acres of land on branches of Sugar Creek in 96<sup>th</sup> District in Union County, and hath such shape and Marks, as the above Plat Represents  
 Survey. 15<sup>th</sup> July 1786 Jofse Connell D<sup>y</sup>  
 Recorded 17<sup>th</sup> Jan<sup>y</sup>. 1787, Det. self.



State of South Carolina Pursuant to a warrant from John Thomas Esq. Comr. of locations dated 14<sup>th</sup> June 1786, I have admeasured and laid out unto Joseph Little a tract of 144 acres of land, on dining Creek in 96<sup>th</sup> District in Union County, and hath such shape & Marks as the above Plat Represents, Survey. 15 June 1786,  
 Recorded 17<sup>th</sup> Jan<sup>y</sup>. 1787 Jofse Connell D<sup>y</sup>.



State of South Carolina Pursuant to a warrant from John Thomas Esq. Comr. of locations, Dated 14<sup>th</sup> June 1786, I have admeasured and laid out unto John East a tract of 99 acres of land, in 96<sup>th</sup> District on the waters of Indian Creek of Enoree river, Bounded on all sides as are above Mentioned, and hath such shape and Marks as the above Plat Represents,  
 Survey. 14<sup>th</sup> Dec. 1786  
 Recorded 19<sup>th</sup> Jan<sup>y</sup>. 1787, Det. self, by Wm. Hunter D<sup>y</sup>.

